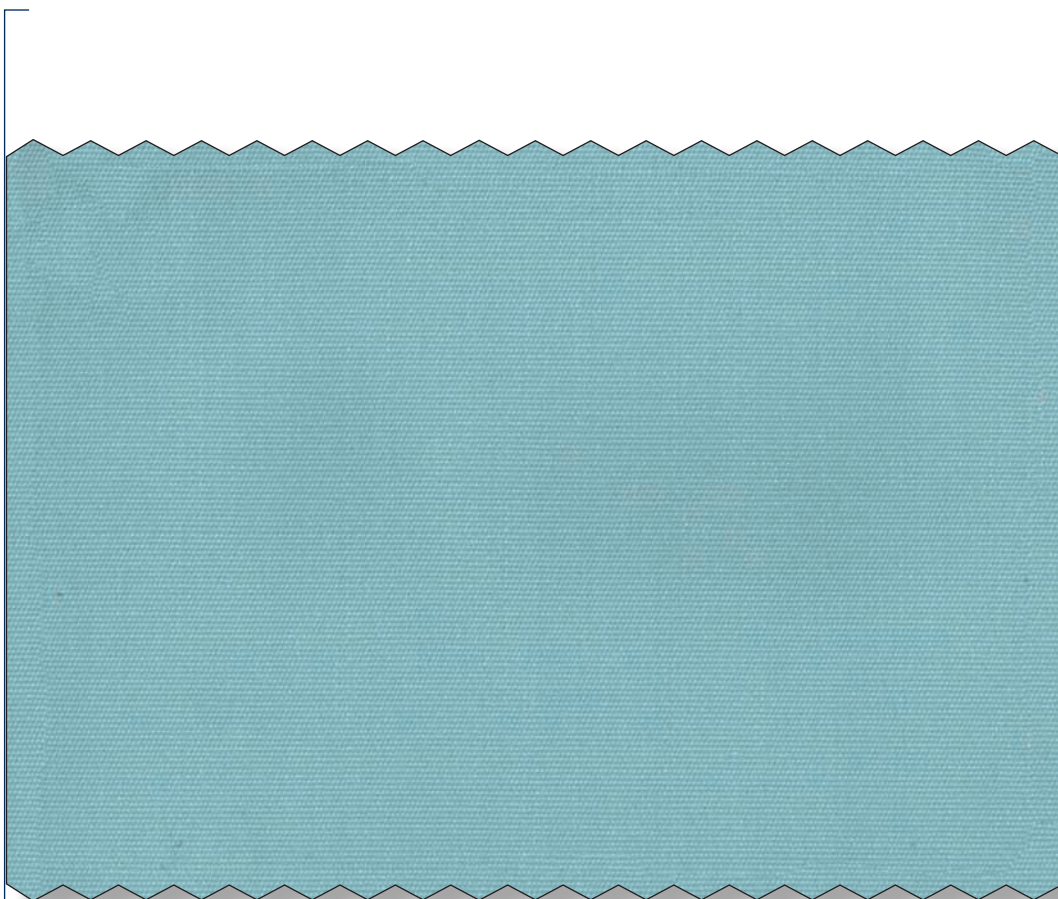


Noémie "OUTDOOR"
Bleu uni Azur
0721590 42



Les Quatre Parties
du Monde
réf. 0420390 42



Exemple de coordonné / *Suggestion of coordonate*

**100 % Acrylique - Tempotest - Teint masse /
100 % Solution dyed outdoor acrylic fiber**

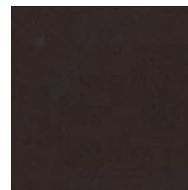
Résistance des couleurs à la lumière et aux intempéries : degré > 7/8

Colour fastness to the sun and weather conditioned : degree > 7/8

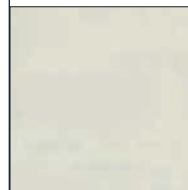
Largeur / **Width** : **152 cm / 58.9"**

Poids / **Weight** g/ml : **405**

Martindale : **17 000**



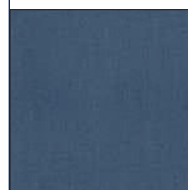
réf. 0721590 79
Uni Chocolat



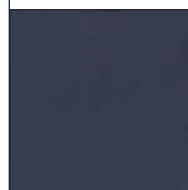
réf. 0721590 00
Uni Blanc



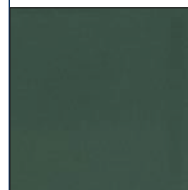
réf. 0721590 08
Uni Rouge



réf. 0721590 46
Uni Bleu



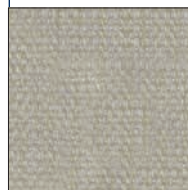
réf. 0721590 49
Uni Marine



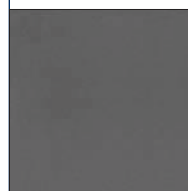
réf. 0721590 52
Uni Vert



réf. 0721590 62
Uni Jaune



réf. 0721590 73
Uni Lin



réf. 0721590 75
Uni Taupe

Coloris

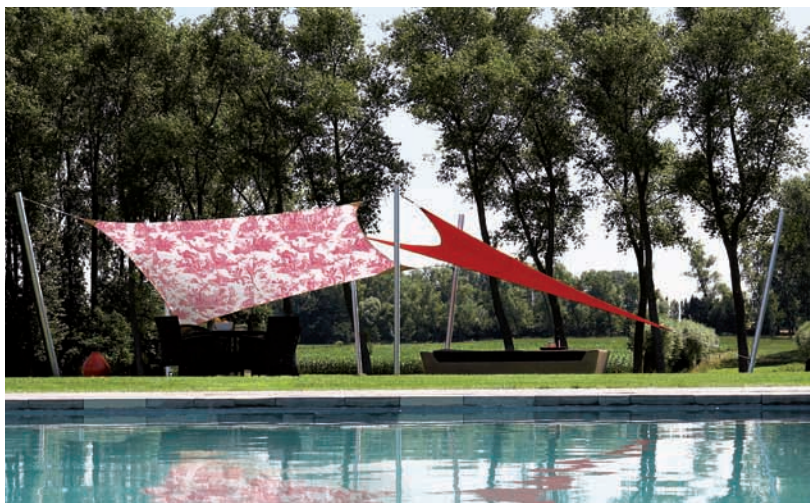
Noémie "OUTDOOR"

Un uni lumineux parfaitement coordonné aux coloris des Quatres Parties du Monde "EXTERIEURS"



This bright plain fabric is perfectly coordinated to our "Quatre Parties du Monde OUTDOOR" line.

www.toilesdejouy.fr



© Umbrosa